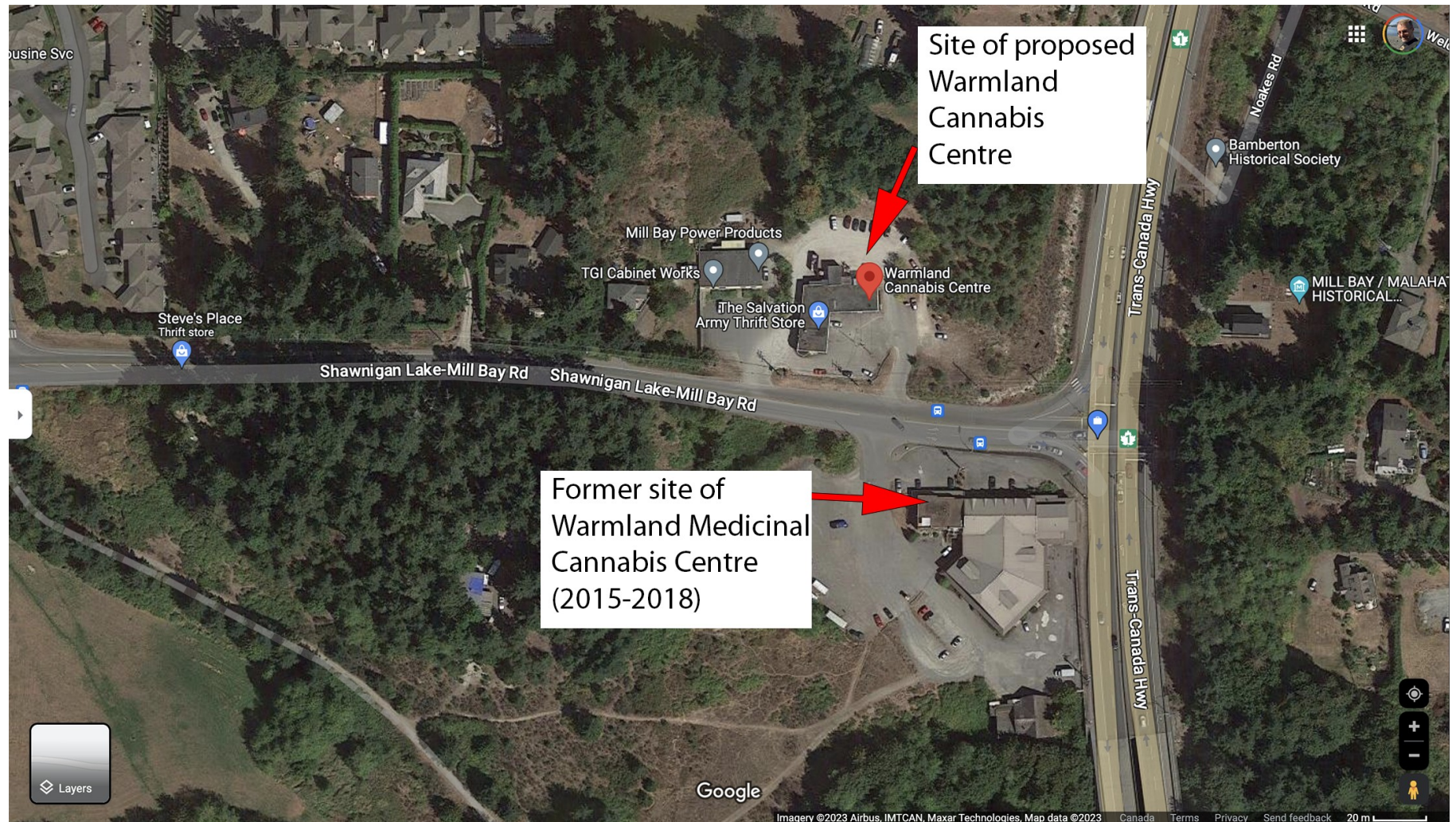




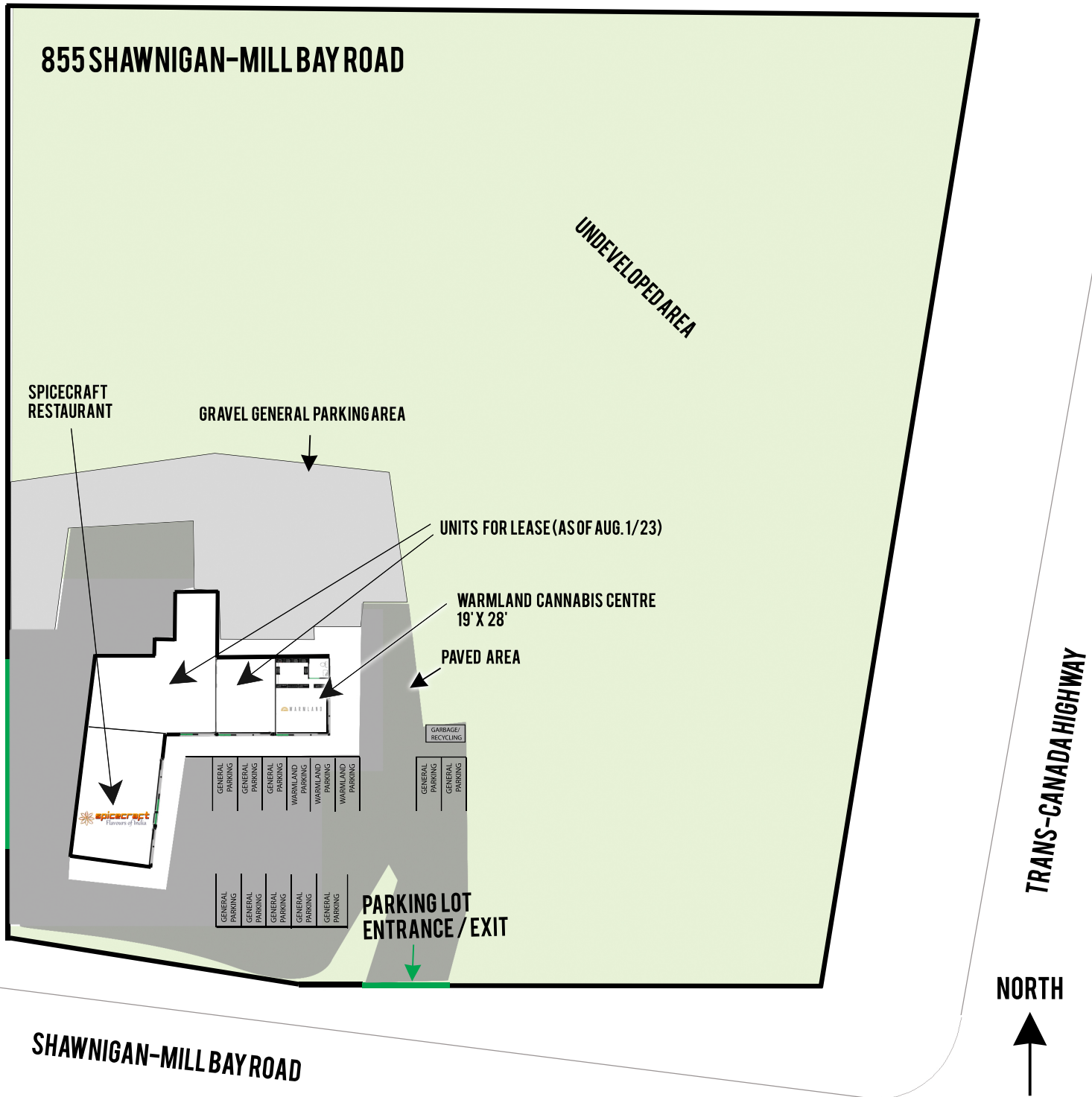


**Proposed location: 855 Shawnigan-Mill Bay Rd., corner unit on lower level (unit 101)**





# SITE PLAN W/ PLAZA'S MAIN LEVEL



## BUSINESSES OPERATING ON SITE:

- \* Spicecraft - Flavours of India Restaurant
- \* Salvation Army Thrift Store (upper level w/ entrance & parking at rear of building)
- \* Warmland Cannabis Centre (proposed location)
- \* Two units are for lease